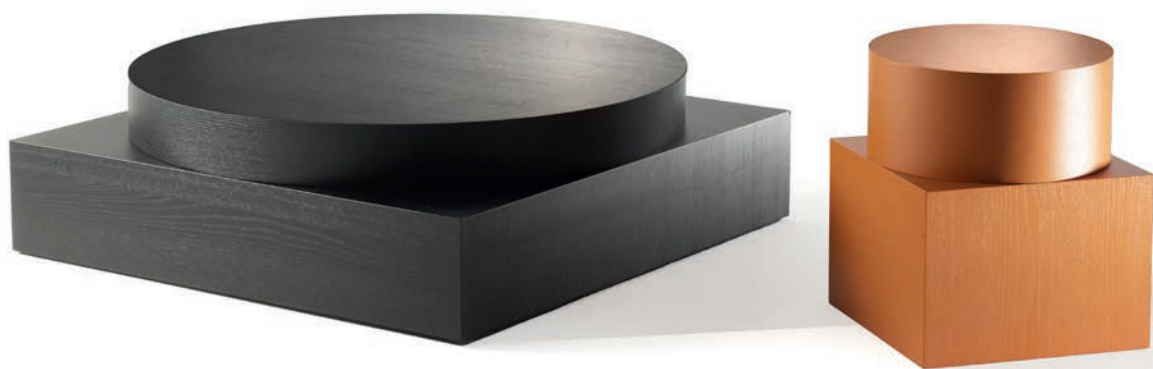


Zymmo 794/795



Design

Christian Woo

2025

Tavolini

Struttura in MDF
impiallacciata in frassino
laccato poro aperto colore
talco, caramello, alga,
amaranto e nero.

Small tables

MDF structure veneered
with open-pore lacquered
ash in talc, caramel, algae,
amaranth and black.

Petites tables

Structure en MDF plaquée
en frêne laqué pore ouvert
dans les couleurs talc,
caramel, algues, amarante
et noir.

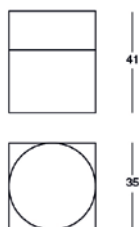
Beistelltische

Gestell aus MDF, offenporig
lackierter Esche furniert
in den Farben Talkum,
Karamell, Algen, Amarantröt
und schwarz.

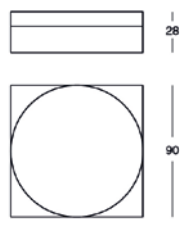
Mesitas

Estructura en MDF chapada
en fresno lacado a poro
abierto en colores talco,
caramelo, alga, granate y
negro.

794



795



Struttura/Frame/Structure/Gestell/Estructura

